

# 3615/4415/6015 Driftwood Log Set Installation Instructions (See SKUs Below)

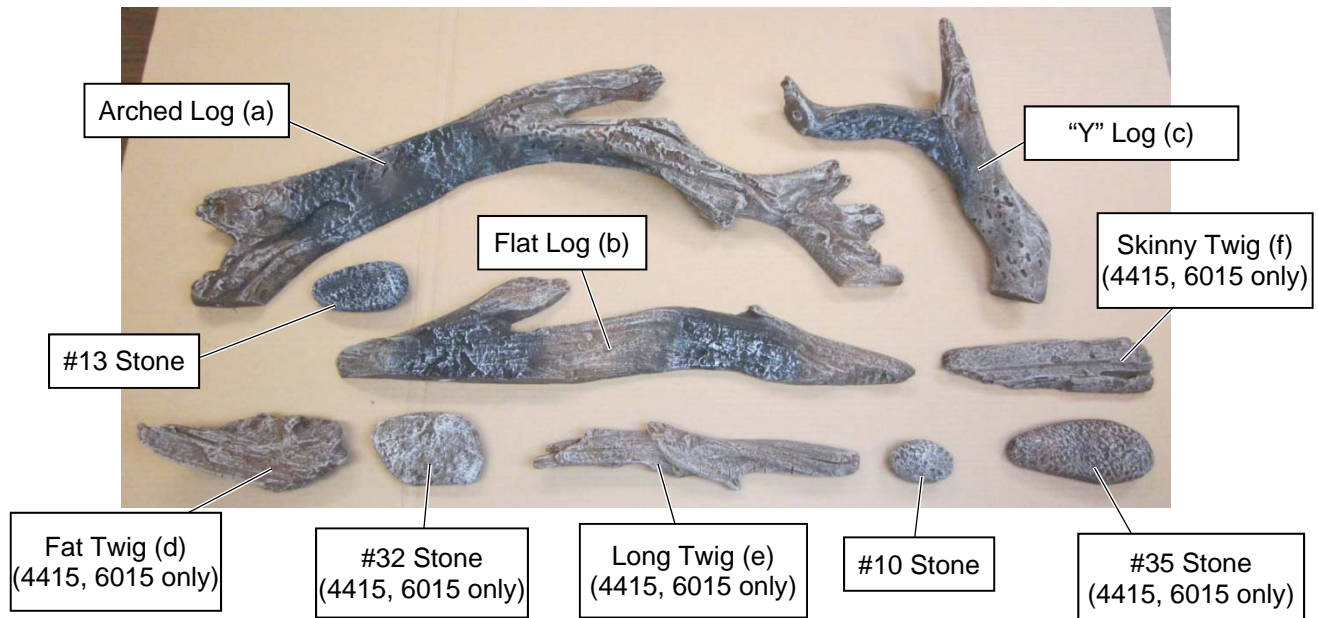
## WARNINGS:

- Make sure the gas control valve is OFF and the heater is cool prior to conducting service.
- Failure to position the parts in accordance with these diagrams or failure to use only parts specifically approved with this appliance may result in property damage or personal injury.
- If using propane (LP), convert the appliance before installing the logs (see the owners manual for details).

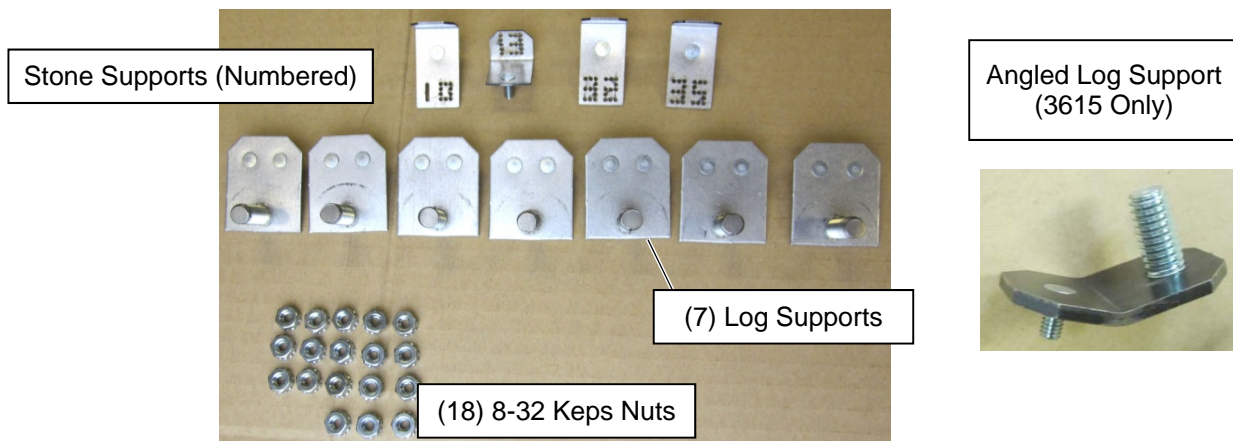
## SKU Compatibility

- 3615 HO GSR2 (94500964, 94500969)
- 4415 HO GSR2 (94500964, 94500969)
- 6015 HO GSR2 (94500964, 94500969)
- 4415 See Through (SKU 94500966) – This log set installs the same as the 4415 and has details on both sides.

## 10-Piece Log/Stone Set



## Stone Supports and Attachment Nuts

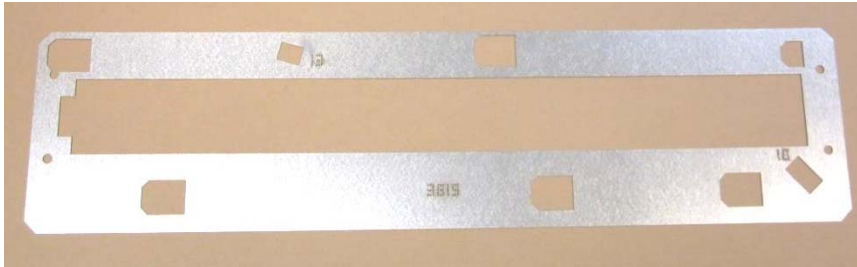


# 3615/4415/6015 Driftwood Log Set Installation Instructions (See SKUs Below)

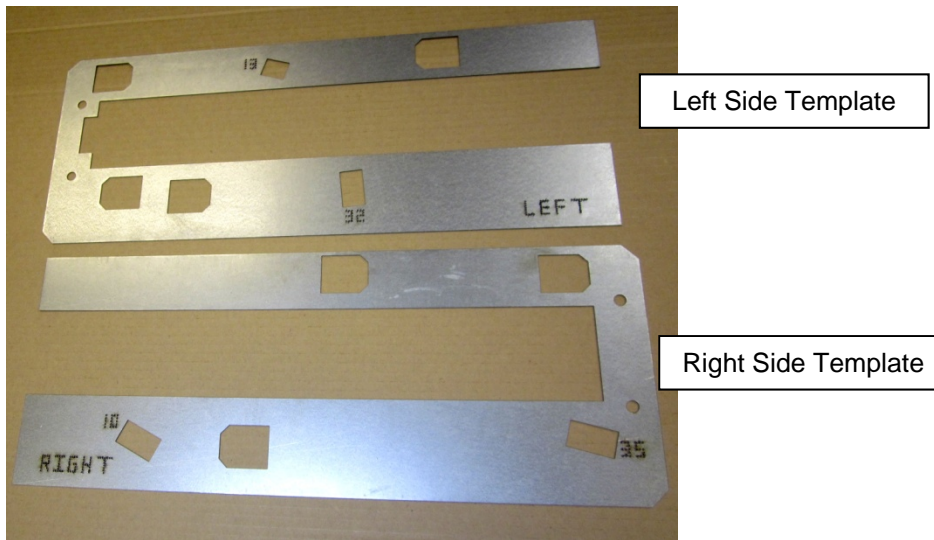
## Templates

Each template is specific to the model it is installed on (the 3615 and 6015 have the model number cut into them, the 4415 does not). On the 4415 and 6015 there is a left and right side. The word "LEFT" and "RIGHT" are cut into the template for identification (see pictures below). Make sure the template is right side up so the numbering/lettering read correctly.

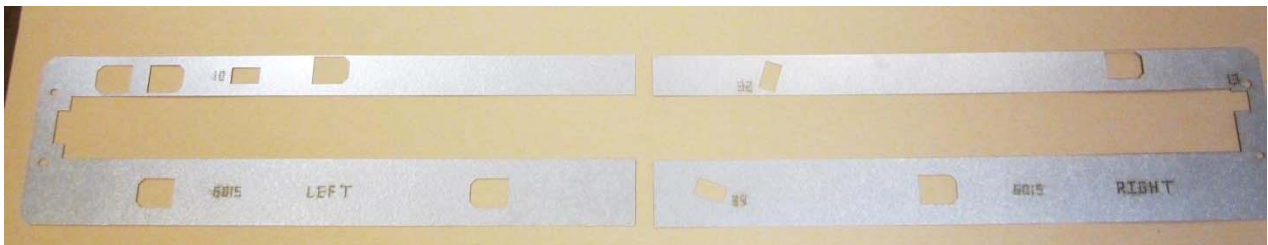
### **3615 Template**



### **4415 Template (4415 and 4415 See-Through)**



### **6015 Template**



# 3615/4415/6015 Driftwood Log Set Installation Instructions (See SKUs Below)

## Preparing the Glass Tray

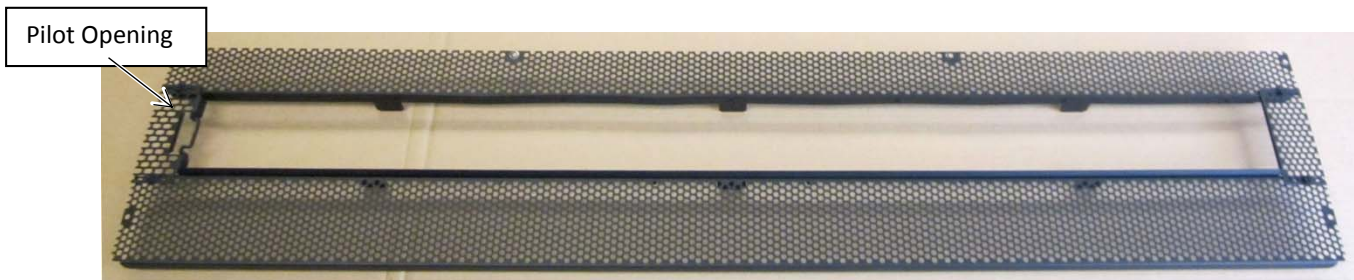
### HINTS:

- **If converting to LP (propane), convert the appliance prior to installing the log set.**
- The fireplace should be in place, with the gas line and vent attached and the firebacks installed (see owner's manual for further details).

1. Remove the glass tray. Remove the screws holding it in place (1/4" nutdriver – 6 screws for 3615 and 4415, 7 screws for the 6015).

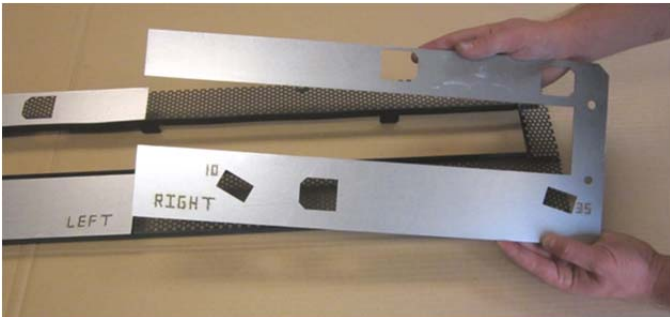
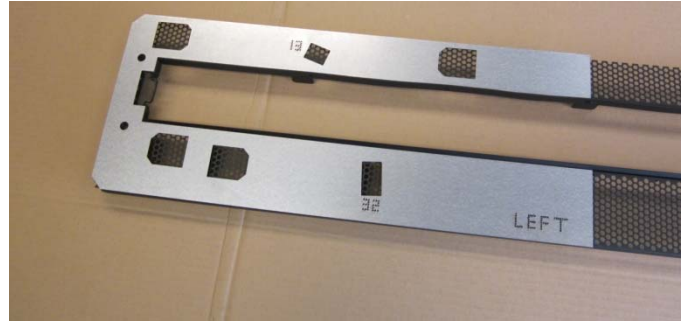
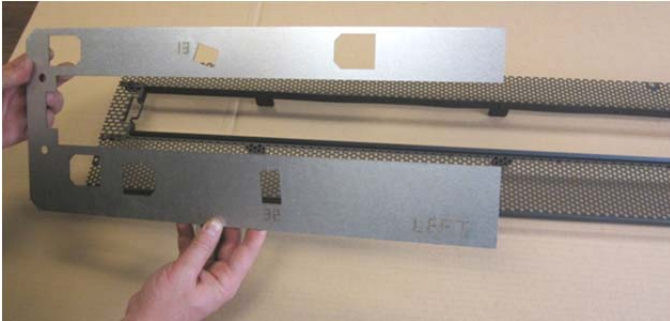


2. Place the glass tray on a suitable non-scratching surface (cardboard or workbench). Make sure the tray is positioned as it installs in the fireplace (pilot opening is to the left side).

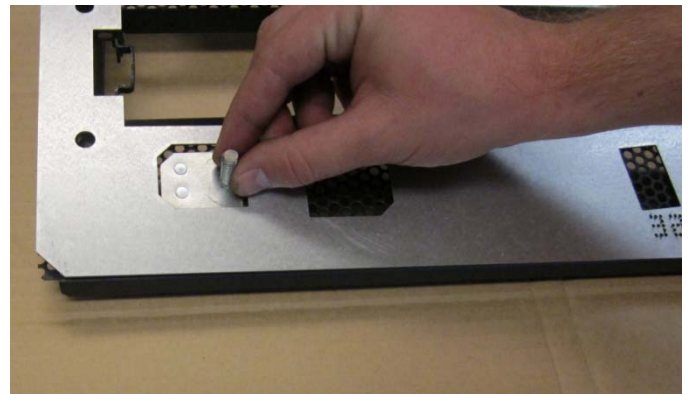
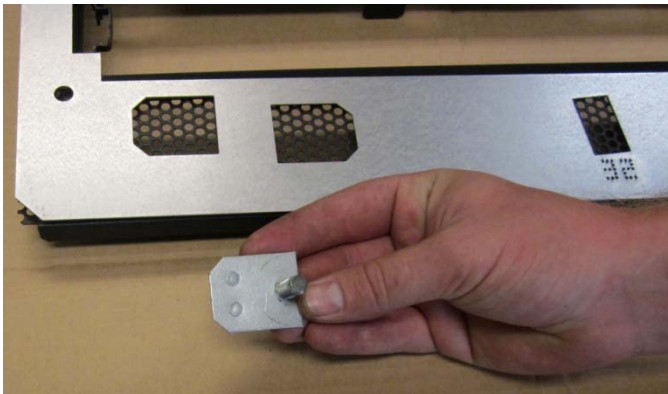


# 3615/4415/6015 Driftwood Log Set Installation Instructions (See SKUs Below)

3. Place the specific template(s) for your fireplace over the glass tray as shown below (on the 4415 & 6015 note the left and right sides).

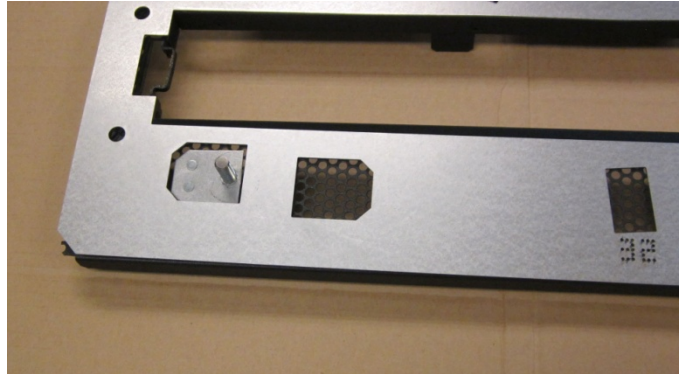
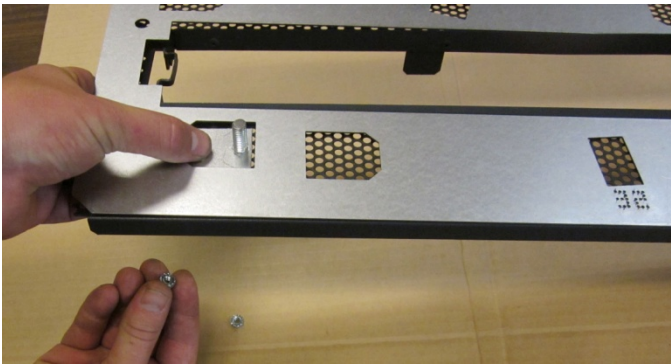


4. Place one of the log supports into the template as shown below. Each log support has a unique shape that fits into a similarly shaped cutout on the template.

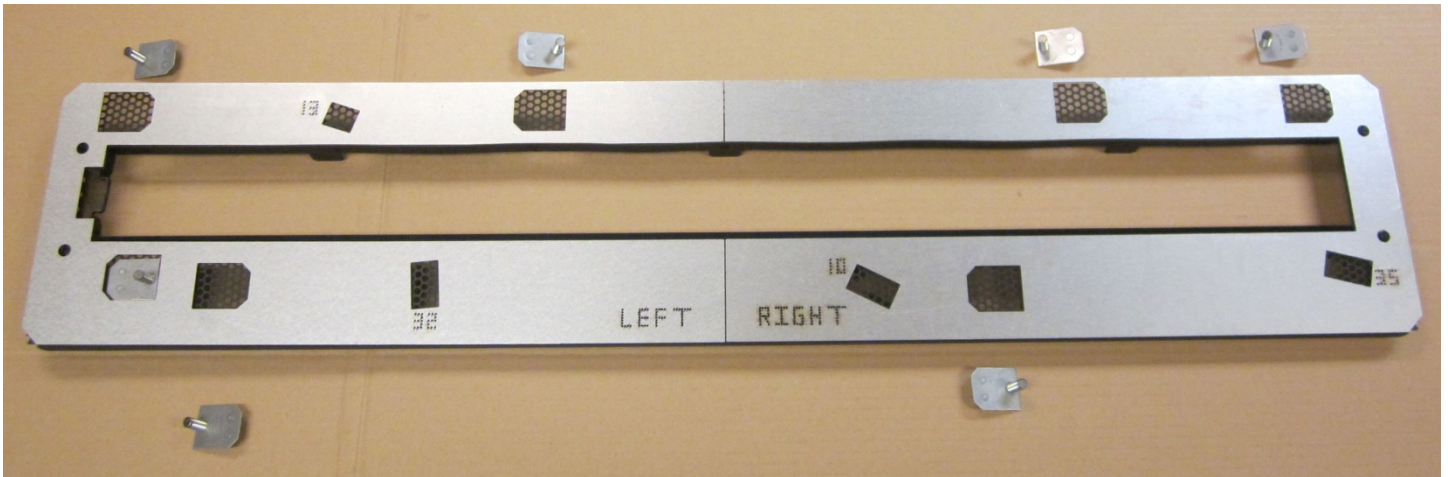


# 3615/4415/6015 Driftwood Log Set Installation Instructions (See SKUs Below)

5. Attach the log support with two of the included 8-32 nuts (11/32" nutdriver).

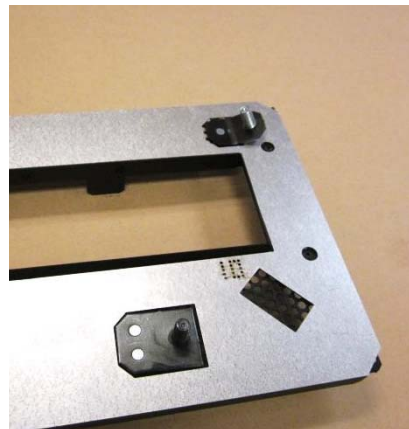


6. Repeat steps 4 and 5 for the remaining log supports. The 4415 (pictured below) and 6015 use 7 log supports. The 3615 uses only 5 (discard the remaining log support).



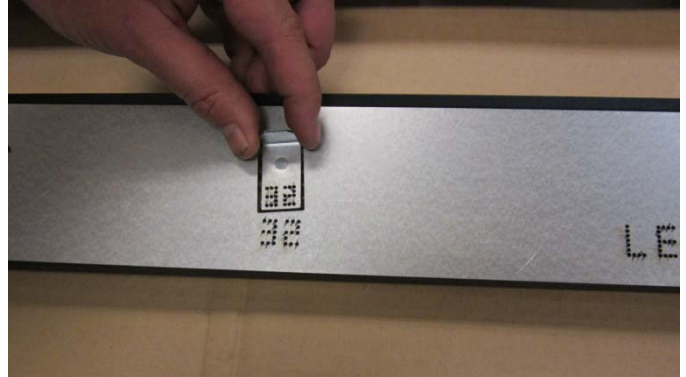
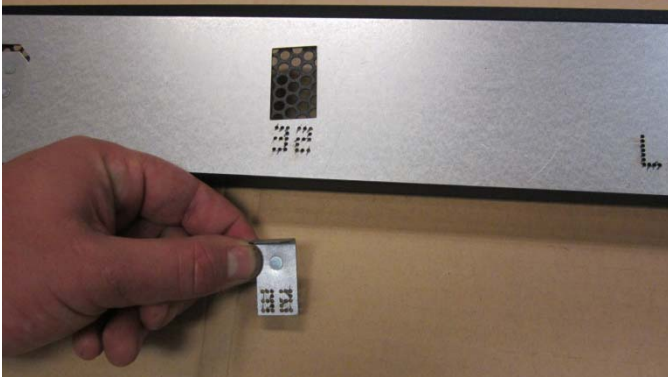
## 3615 Only

Attach the angled log support to the glass tray with one nut as shown below. NOTE: When removing the template for the 3615, you will need to lift and slide it to the right to disengage it from the angled log support.

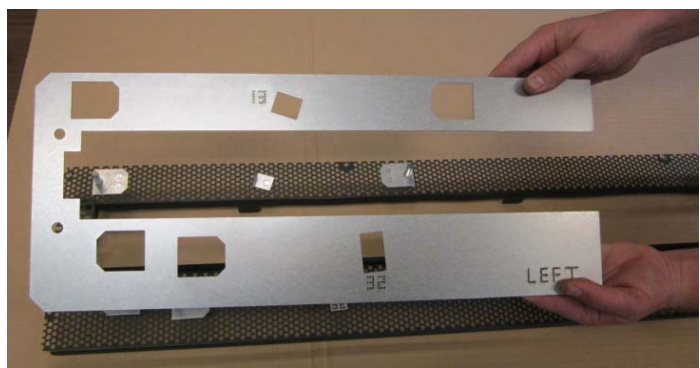
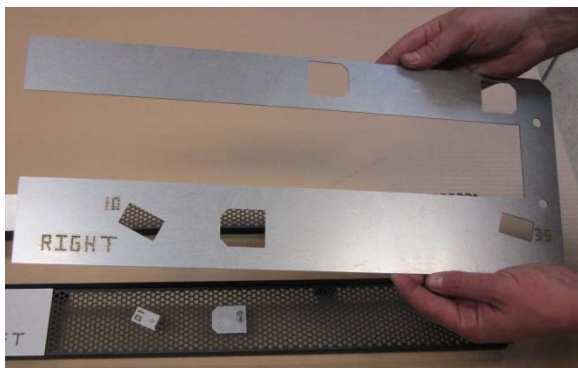


# 3615/4415/6015 Driftwood Log Set Installation Instructions (See SKUs Below)

7. Install the numbered stone supports as shown below. Place the numbered support into the corresponding cutout on the template (the number on the tab faces the same direction as the number on the template). Once in place, secure with one of the included 8-32 nuts (11/32" nutdriver). Repeat this process for all of the stone supports (3615 uses 2 stone supports, 4415 and 6015 use 4).

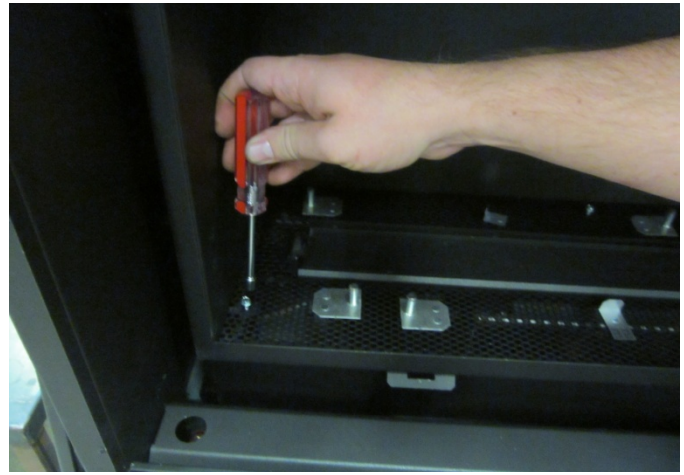
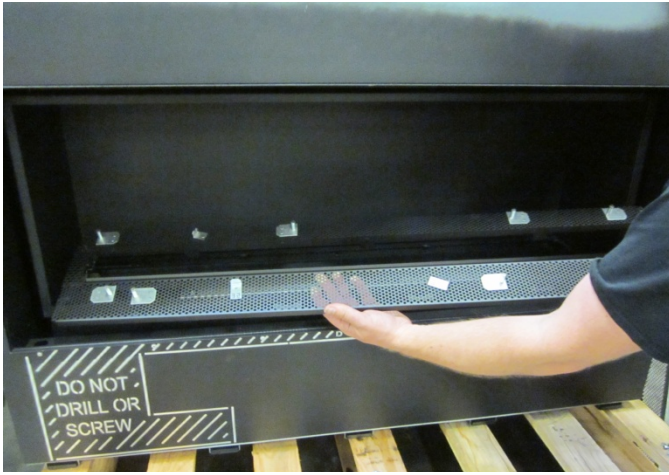


8. Remove and discard the template(s).



# 3615/4415/6015 Driftwood Log Set Installation Instructions (See SKUs Below)

9. Install the glass tray into the fireplace and secure using the screws removed earlier.



# 3615/4415/6015 Driftwood Log Set Installation Instructions (See SKUs Below)

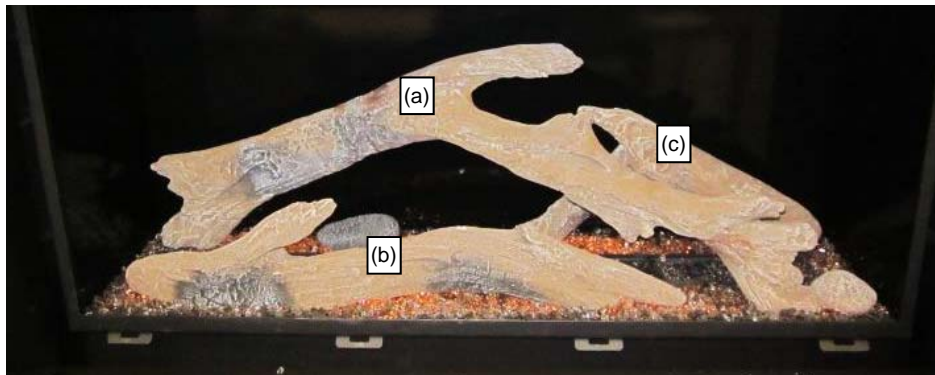
## Driftwood Log, Stone, and Crushed Glass Placement

 The logs are fragile, especially after being exposed to heat.

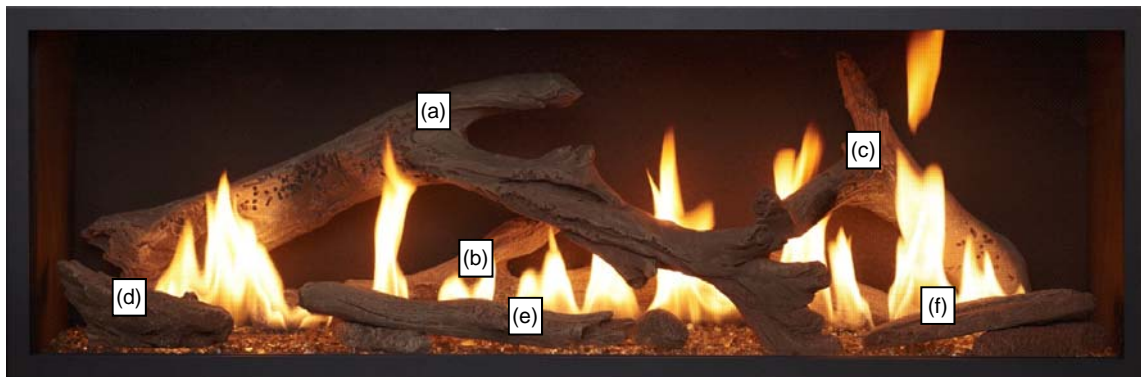
### *Overview*

The log and stone arrangement are unique to each model of fireplace. The final layout for each model is shown below.

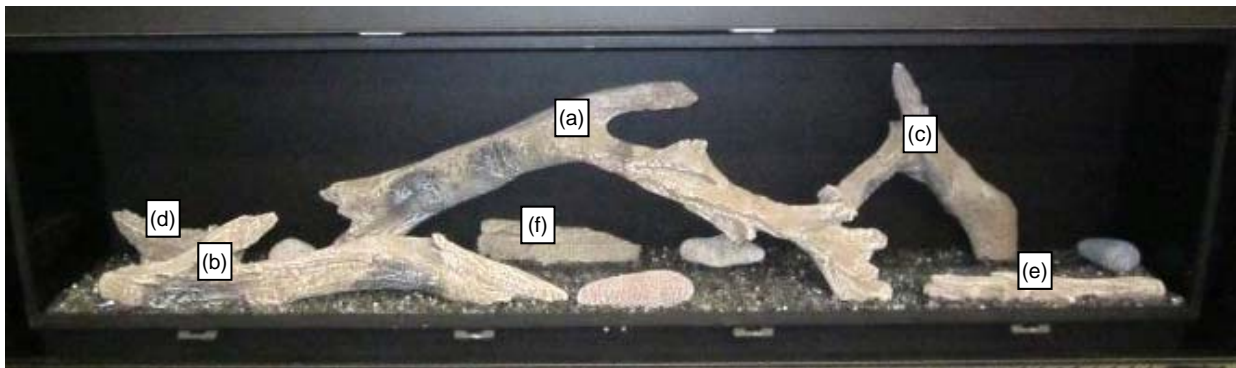
#### **3615:**



#### **4415:**



#### **6015:**





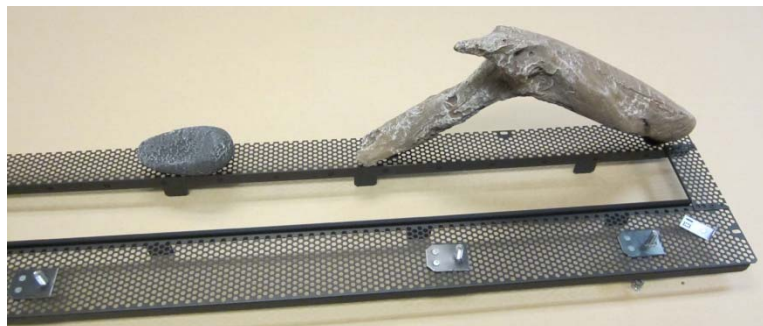
# 3615/4415/6015 Driftwood Log Set Installation Instructions (See SKUs Below)

## 3615 Log Install

1. Place the “Y” log on the glass tray. Holes on the bottom of the log insert into the posts on one of the log supports and the angled log support.



2. Place the #13 stone as shown below (the number is printed on the back of the stone). Note how the slot on the stone fits over the tab on the stone support. **The printed number on the stone faces the rear of the firebox.**



3. Place the flat log as shown below. Holes on the bottom of the log accept the pins from the log supports.



# 3615/4415/6015 Driftwood Log Set Installation Instructions (See SKUs Below)



You may wish to measure out the amount of crushed glass needed for the installation (see the final page of this instruction sheet) and place one layer of crushed glass on the rear of the glass support and burner. Placing the glass at the rear is easiest at this step of log installation. Do not place glass on the left back corner (this is where the arched log is placed).

- Place the arched log as shown below. Holes on the bottom of the log accept the pins from the log supports.



#### Un-Used Log Pin

The arched log has an extra pin on the back side when on the 3615. You may wish to carefully cut it off, pull it out, or conceal it with paint.

- Place the #10 stone as shown below (the number is printed on the back of the stone). Note how the slot on the stone fits over the tab on the stone support. **The printed number on the stone faces the rear of the firebox.**



- Install the crushed glass (see the final page of this instruction sheet).

# 3615/4415/6015 Driftwood Log Set Installation Instructions (See SKUs Below)

## 4415 Log Install

1. Place the flat log on the glass tray. Note how the posts on the log supports insert into the holes on the bottom of the log.



2. Place the #13 stone as shown below (the number is printed on the back of the stone). Note how the slot on the stone fits over the tab on the stone support. **The printed number on the stone faces the rear of the firebox.**

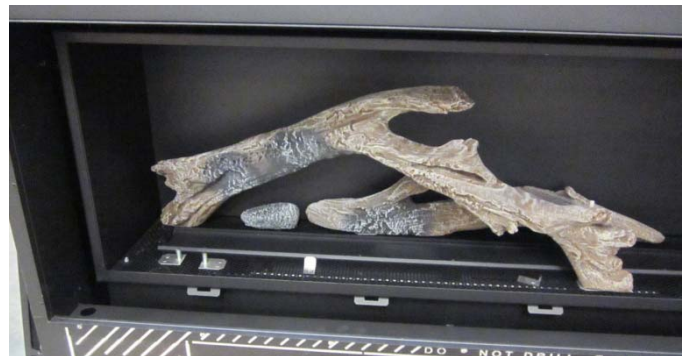


# 3615/4415/6015 Driftwood Log Set Installation Instructions (See SKUs Below)



You may wish to measure out the amount of crushed glass needed for the installation (see the final page of this instruction sheet) and place one layer of crushed glass on the rear of the glass support and burner. Placing the glass at the rear is easiest at this step of log installation. Do not place glass on the left back corner (this is where the arched log is placed).

3. Place the arched log as shown below. Note how the post on the log support insert into the holes on the bottom of the log.



4. Place the "Y" log as shown below. Note how the post on the log support and pin on arched log insert into the holes on the bottom of the "Y" log. When in place "Y" log helps support the arched log.



## 3615/4415/6015 Driftwood Log Set Installation Instructions (See SKUs Below)

5. Place the fat twig as shown below. Note how the holes on the twig fits over the posts on the log supports.



6. Place the #32 stone as shown below (the number is printed on the back of the stone). Note how the slot on the stone fits over the tab on the log support. **The printed number on the stone faces the rear of the firebox.**



# 3615/4415/6015 Driftwood Log Set Installation Instructions (See SKUs Below)

7. Place the long twig as shown below. The twig rests on the glass tray and the #32 stone. Do not place the twig over the air slot or burner.



8. Place the #10 stone as shown below (the number is printed on the back of the stone). Note how the slot on the stone fits over the tab on the log support. **The printed number on the stone faces the rear of the firebox.**



## 3615/4415/6015 Driftwood Log Set Installation Instructions (See SKUs Below)

9. Place the #35 stone as shown below (the number is printed on the back of the stone). Note how the slot on the stone fits over the tab on the log support. **The printed number on the stone faces the rear of the firebox.**



10. Place the skinny twig as shown below. The twig rests on the glass tray and #35 stone. Do not place the twig over the air slot or burner.



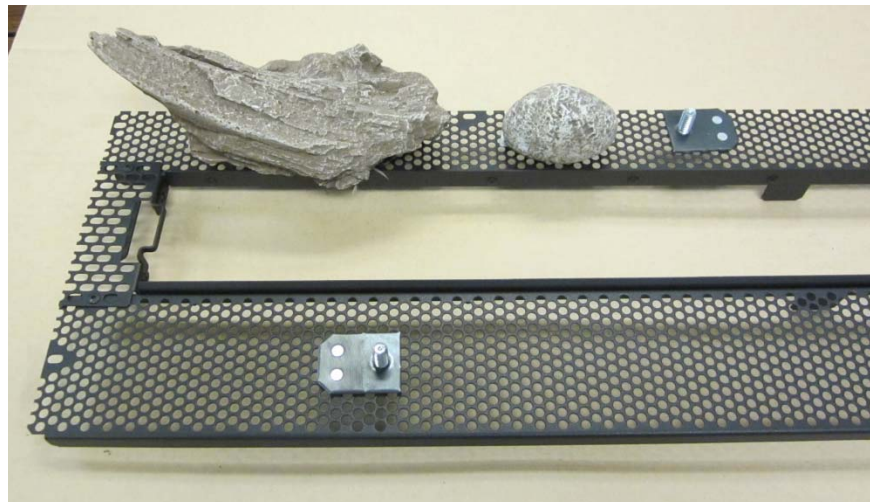
# 3615/4415/6015 Driftwood Log Set Installation Instructions (See SKUs Below)

## 6015 Log Install

1. Place the fat twig on the back left of the glass tray. Note how the post on the log supports insert into the holes on the bottom of the twig.



2. Place the #10 stone as shown below (the number is printed on the back of the stone). Note how the slot on the stone fits over the tab on the stone support. **The printed number on the stone faces the rear of the firebox.**





## 3615/4415/6015 Driftwood Log Set Installation Instructions (See SKUs Below)

3. Place the skinny twig as shown below. Note it rests upright and is half way between the log support and stone support.

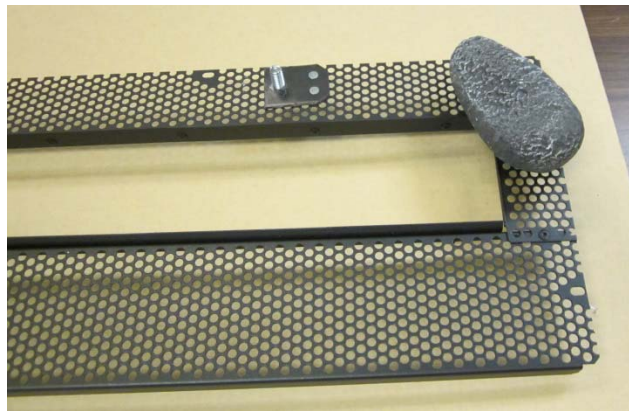


4. Place the #32 stone as shown below (the number is printed on the back of the stone). Note how the slot on the stone fits over the tab on the log support. **The printed number on the stone faces the rear of the firebox.**



## 3615/4415/6015 Driftwood Log Set Installation Instructions (See SKUs Below)

5. Place the #13 stone on the far right side of the glass tray as shown below (the number is printed on the back of the stone). Note how the slot on the stone fits over the tab on the log support. **The printed number on the stone faces the rear of the firebox.**



You may wish to measure out the amount of crushed glass needed for the installation (see the final page of this instruction sheet) and place one layer of crushed glass on the rear of the glass support and burner. Placing the glass at the rear is easiest at this step of log installation. Do not place glass on the area near the log supports (this area must be kept flat for log placement).

6. Place the arched log as shown below. The post on the log supports insert into the holes on the bottom of the log.

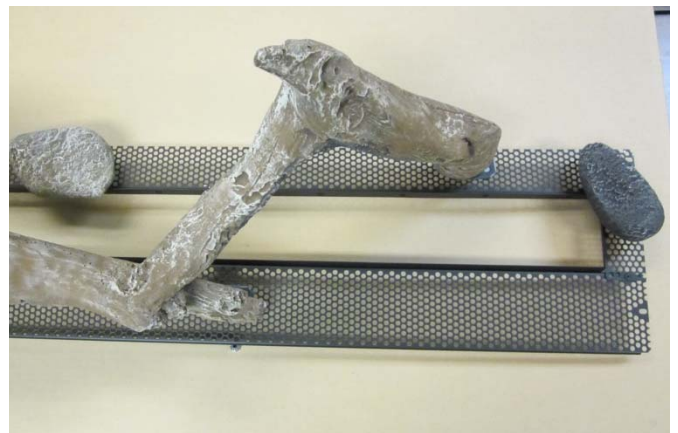


## 3615/4415/6015 Driftwood Log Set Installation Instructions (See SKUs Below)

7. Place the "Y" log as shown below. Note how the post on the log support and pin on arched log insert into the holes on the bottom of the "Y" log. When in place "Y" log helps support the arched log.



TOP VIEW



8. Place the long log as shown below. The posts on the two log supports into the holes on the bottom of the log.



## 3615/4415/6015 Driftwood Log Set Installation Instructions (See SKUs Below)

9. Place the #35 stone as shown below (the number is printed on the back of the stone). Note how the slot on the stone fits over the tab on the log support. **The printed number on the stone faces the rear of the firebox.**



10. Place the long twig as shown below. The twig rests on the front left of the glass tray. Do not place the twig over the air slot or burner.



# 3615/4415/6015 Driftwood Log Set Installation Instructions (See SKUs Below)

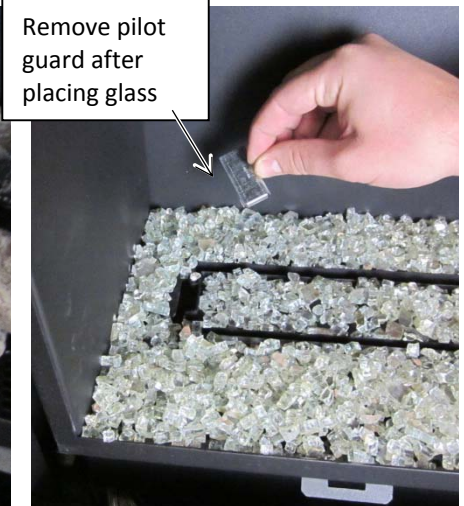
## Crushed Glass Installation (see manual for additional details).



**Do not allow the crushed glass to block the air slots or to become too thick (maximum 1 layer deep on the burner). Failure to properly install glass may lead to sooting and improper burning.**

<b>Quantity of Crushed Glass</b>	3615	4415	6015
	4.5 lbs. (2 Kg)	4 lbs. (1.8 Kg)	7 lbs. (3.1 Kg)

Before installing the crushed glass, make sure the pilot guard is in place (it is zip-tied to the glass tray – remove and discard the zip-tie). After installing the glass, remove the pilot guard. Make sure no glass covers the pilot opening.



Disperse the crushed glass evenly along the glass tray.

Make sure the two air channels are free of crushed glass. Use the glass frame tool (or screwdriver) to clear this area. **Make sure the glass is only 1 layer deep on the burner.**

